



Driver comfort

# Kalori

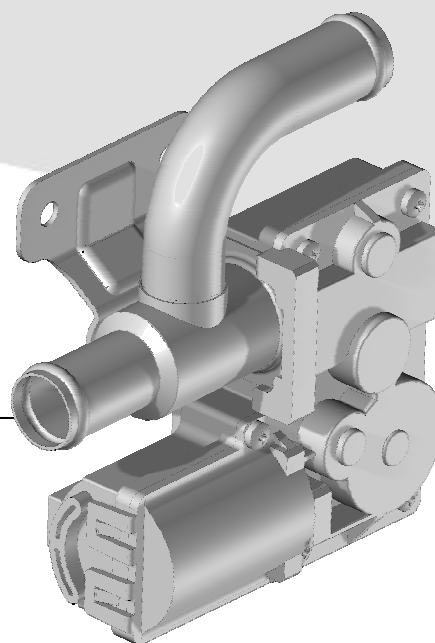


## User's Manual

---

Proportional valve P/N 340.50.029 (12V)

P/N 340.50.030 (24V)



Revision	Date	Remark
A	10/05/2017	Creation
B	11/06/2018	Adding pressure information
C	18/10/2018	Adding Mating Connector reference

## **Contents**

1. SAFETY INSTRUCTIONS .....	3
2. GENERAL PRESENTATION.....	3
3. INSTALLATION.....	3
a) Technical characteristics for proportional valve 340.50.029 .....	3
b) Technical characteristics for proportional valve 340.50.030 .....	3
c) Dimensions .....	4
d) Fluid connection .....	4
e) Connector arrangement.....	5

## 1. SAFETY INSTRUCTIONS



Remove the battery before installation or maintenance.



It must be installed by a qualified professional.



Protect from impact.



Clean with a damp cloth.

## 2. GENERAL PRESENTATION

This proportional valve is dedicated to the control of the water flow inside the heater of the vehicle HVAC.

It must be used only with Kalori HVAC.

If you install a HVAC different from Kalori standard, the installation must be validated by your dealer.

## 3. INSTALLATION

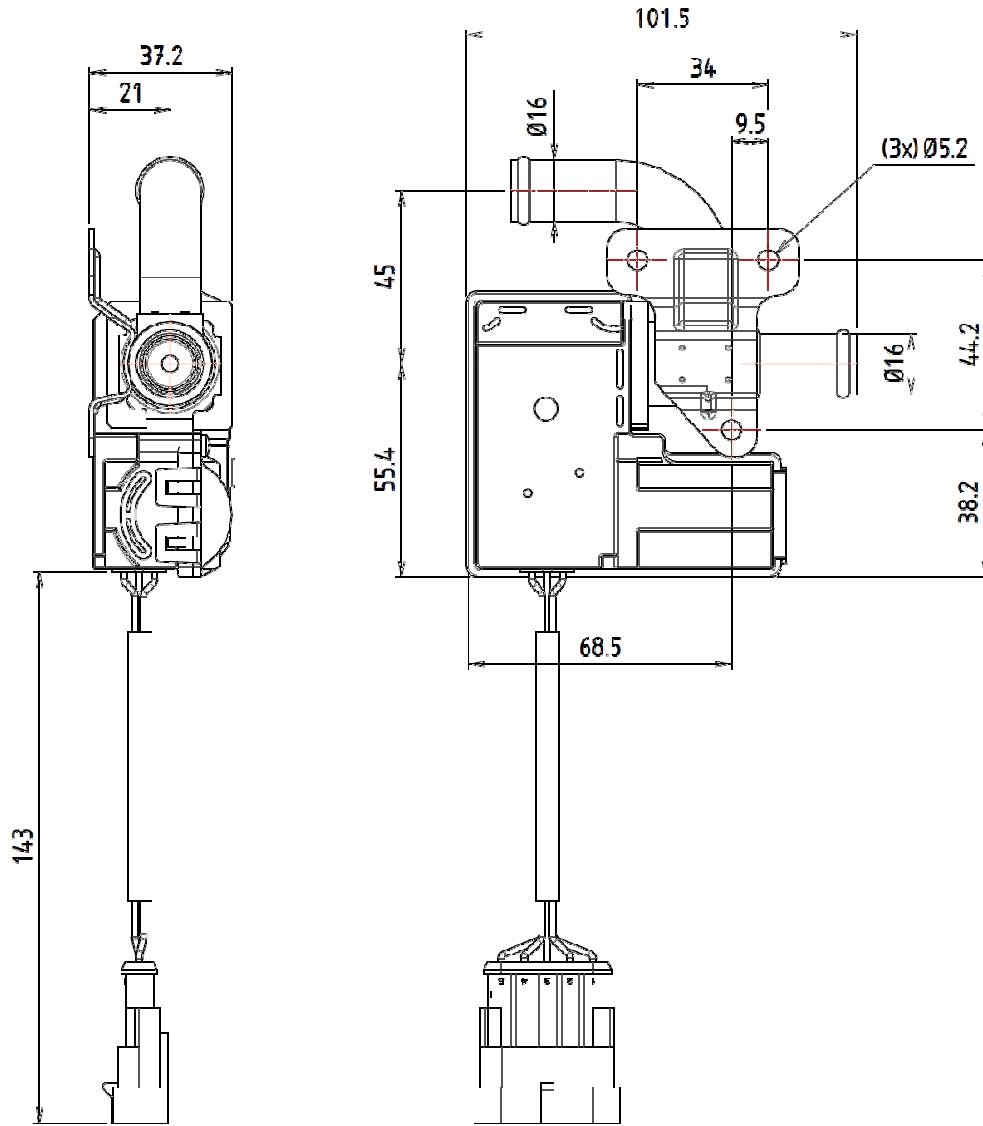
### a) Technical characteristics for proportional valve 340.50.029

Operating voltage range	9VDC to 16VDC
Nominal power supply voltage	12VDC
Operating temperature range	From -40°C to 100°C
Ambient relative humidity	≤95%
IP range	IP 67
Volume flow	0-2000l/h
Operation pressure	<250Kpa
Cooling liquid	Water-glycol 50%/50%


### b) Technical characteristics for proportional valve 340.50.030

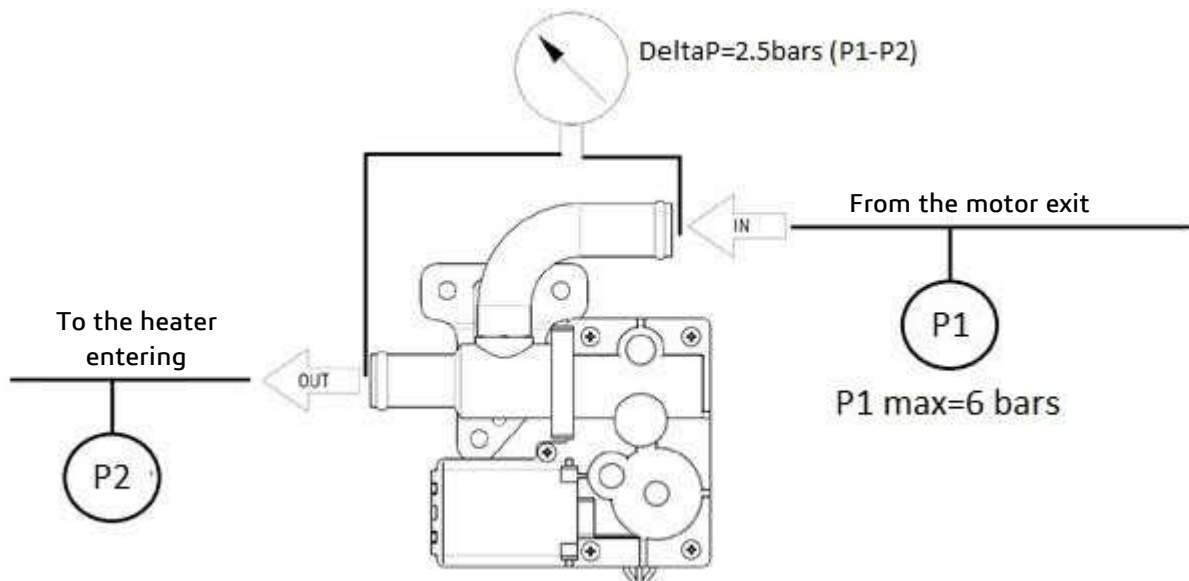
Operating voltage range	18VDC to 32VDC
Nominal power supply voltage	24VDC
Operating temperature range	From -40°C to 115°C
Ambient relative humidity	≤95%
IP range	IP 67
Volume flow	0-2000l/h
Operation pressure	<250Kpa
Cooling liquid	Water-glycol 50%/50%

### c) Dimensions

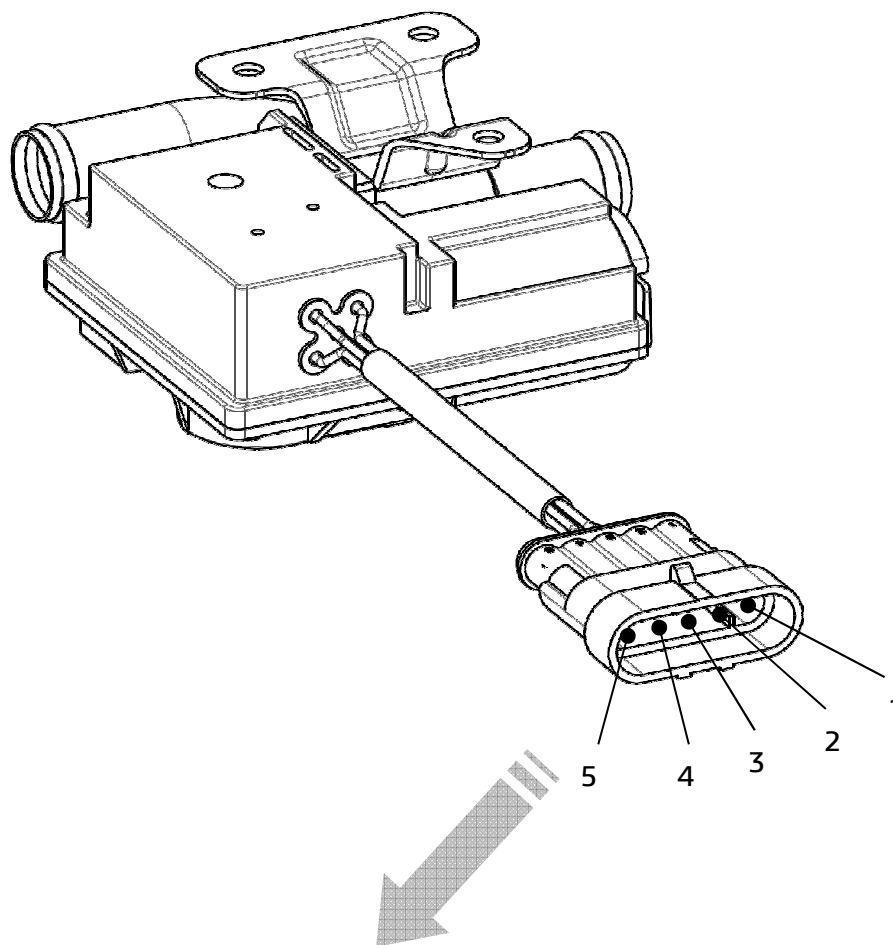


### d) Fluid connection

This proportional valve must be installed between the motor coolant exit and the heater coolant entering. 



### e) Connector arrangement



<b>Mating connector:</b>	
<b>AMP 282089-1 / Ref. Kalori 340.15.217</b>	
1	Motor +/-
2	Motor -/+
3	5Vdc
4	Feedback signal
5	Ground





KALORI S.A.S

Voie E  
ZI de Mariage – Voie E  
F-69330 PUSIGNAN  
FRANCE

Tel. : +33 (0)4 72 93 10 10  
Fax : +33 (0)4 72 93 10 19

[www.kalori.com](http://www.kalori.com)

401.00.104 Rev A